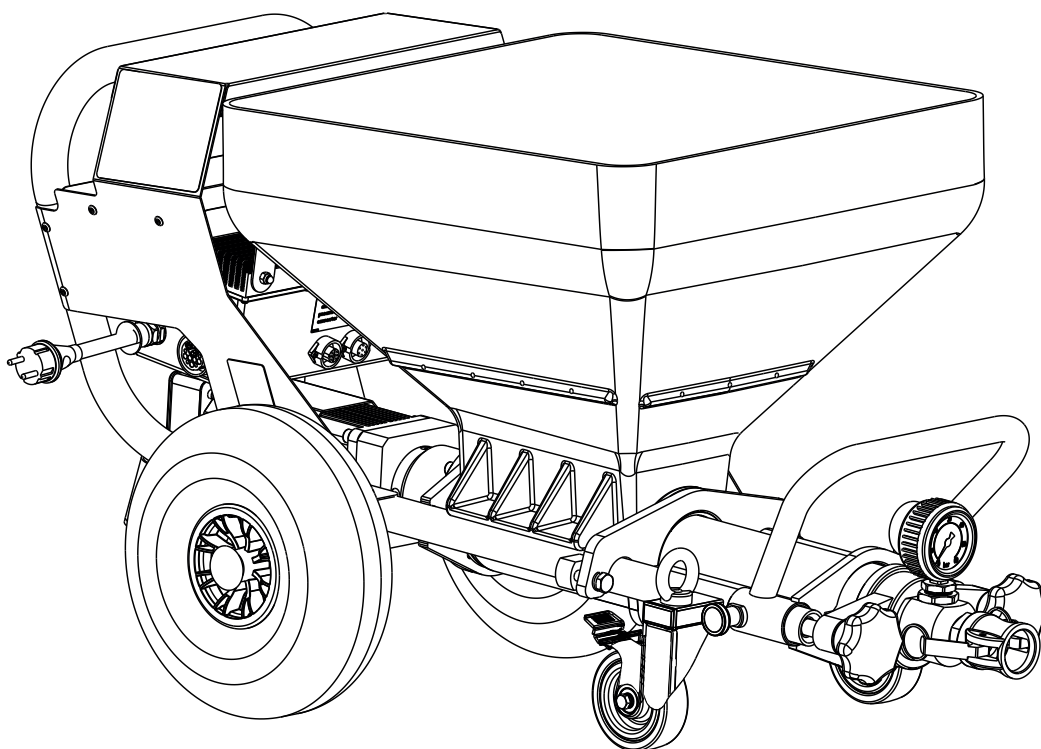




Originalbetriebsanleitung

- D -	Betriebsanleitung	2
- GB -	Operating manual	29
- F -	Mode d'emploi	56
- NL -	Gebruikshandleiding	84


Plast Coat 1030



Translation of the original operating instructions

Warning!

Mortar spraying machines develop high spraying pressures.

	Attention – Danger of injury!
①	Never reach into the spray jet with your fingers or hand! Never point the spray lance at yourself or other persons! Coating materials are caustic or irritating! Protect your skin and eyes!
②	The following points are to be observed in accordance with the operating manual before every start-up: 1. Observe the permissible pressures. 2. Check all the connecting parts for leaks.
③	Instructions for regular cleaning and maintenance of the machine are to be observed strictly. Observe the following point before any work on the machine and at every working break: 1. Observe the curing time of the coating material. 2. Depressurize the spray lance and mortar hose. 3. Switch off the suction pump.

Ensure safety!

Table of Contents

1	SAFETY REGULATIONS	31	9	MAINTENANCE	44
2	INTRODUCTION TO WORKING WITH THE MORTAR SPRAYING MACHINE PLASTCOAT 1030	33	9.1	Mechanical maintenance	44
2.1	Function of the mortar spraying machine PlastCoat 1030	33	9.2	Electrical maintenance	44
2.2	Processible coating materials	33	9.3	Long periods of non-usage	44
3	TECHNICAL DATA	33	9.4	Shaft seal (fig. 16)	45
4	EXPLANATORY DIAGRAM FOR PLASTCOAT 1030	34	9.5	Rotor replacement	45
4.1	Operating elements and displays on device	35	10	ELIMINATING FAULTS	46
4.2	Drive	35	11	SPARE PARTS LIST FOR PLASTCOAT 1030	50
4.3	Compressor (accessory)	36	11.1	Spare parts list frame	50
4.4	Mortar hose	36	12	SPARE PARTS LIST OF SPRAY LANCE	50
4.5	Spray lance	36	13	PLASTCOAT 1030 ACCESSORIES	52
5	TRANSPORTATION	37	Testing of the mortar spraying machine	54	
5.1	Moving	37	Note on disposal	54	
5.2	Transport using a crane (fig. 4)	37	Important information on product liability	54	
5.3	Transportation in vehicle	37	Guarantee declaration	54	
6	COMMISSIONING	37	CE declaration of conformity	110	
6.1	Installation location	37	European service network	112	
6.1.1	Connection to mains power supply/ Extension cable	37			
6.2	Initial starting-up	37			
6.2.1	Scope of supply	37			
6.2.2	Assembly (fig. 5)	38			
6.3	Connecting the mortar hose	38			
6.4	Compressor (accessory)	39			
6.5	Spray attachment assembly (accessories)	39			
6.6	Connecting the spray lance (fig. 10)	39			
6.7	Preparing the mortar spraying machine (fig. 12)	40			
6.7.1	Rinse the mortar hose	40			
6.8	Beginning of the spraying process	41			
6.9	End of the spraying process	41			
7	GENERAL INFORMATION ABOUT THE APPLICATION TECHNIQUE	42			
7.1	Spraying technique	42			
8	SHUTTING DOWN AND CLEANING	42			
8.1	Cleaning the mortar hose	42			
8.2	Cleaning the device and replacing the stator	42			
8.3	Cleaning the spray lance	44			

1 SAFETY REGULATIONS

The following sources are just a sample of those containing safety requirements for mortar conveyors:

- a) **EN 12001, Conveying, spraying and placing machines for concrete and mortar - Safety requirements**

All local safety regulations in force must be observed.

The following specifications are to be observed in particular to handle mortar spraying machines safely:

Usage of the mortar spraying machine

The mortar spraying machine PlastCoat 1030 may only be used to process the coating materials described on page 33.

Any other usage is not allowed.

Proper usage also includes the observance of the operating manual and the observance of the inspection and maintenance conditions. Always keep the operating manual on hand at the point of use of the mortar spraying machine.

The mortar spraying machine PlastCoat 1030 may only be operated with a manometer. Only the mortar hose specified by the manufacturer may be used.

Use only marked mortar hoses with at least 40 bars operating pressure.

The mortar spraying machine is intended exclusively for commercial use by professionals.

Protection of persons

In order to protect eyes, skin and the respiratory organs: **Wear safety goggles, protective clothing, gloves, possibly use protective skin cream and respiratory equipment.** Do not decouple the mortar hose as long as it is under pressure. Watch the manometer! Wear safety goggles! Do not point the spray lance at persons!

In order to protect your ears **wear ear protection.**

Wear safety shoes when transporting the machine or working with it.

People not needed to assist with machine installation, assembly or operation, must keep away from the machine.

The PC 1030 is equipped with an EMERGENCY STOP switch for emergencies.

Breathing masks

Make a breathing mask available to the processor in order to protect against mineral dust.

Connection to the mains network only via a special feeding point, for example via a distribution board for construction sites, with residual current protective device with $I_{NF} \leq 30 \text{ mA}$.

Avoid soiling of the socket for the remote control at the control unit.



Risk of injury from escaping material.
Before switching on, always check that the material tap on the spray lance is closed.
Close material tap whenever stopping work.



Never operate the mortar spraying machine if the rotor is exposed or if the container has been removed.
Do not reach into the rotor when it is moving. Risk of crushing.
Caution if you have long hair. Only wear close-fitting clothes at work.
Do not insert objects or body parts through the protective grid.
Risk of crushing when folding in the handles, assembling the pump unit and connecting the mortar hose.

Cleaning and maintenance

Never decouple mortar hose or disassemble machine when under pressure. Note pressure reading on pressure gauge.

When performing maintenance work, always switch off mortar spraying machine, disconnect mains plug and ensure it cannot be plugged back in by mistake.

Do not spray down the motor and control unit of the mortar spraying machine with a water-jet, high-pressure cleaner or high-pressure steam cleaner. Danger of short-circuits caused by water ingressing.

Electrical equipment


Work on the machine's electrical equipment may be carried out only by a qualified electrician. The electrical equipment is to be checked regularly. Eliminate faults such as loose connections or scorched cables.

Keep the label on the mortar spraying machine clean and legible.



Whenever the machine is automatically brought to a standstill or during power failure, immediately move the selector switch to "A" to prevent the machine starting back up again unintentionally.
There is a danger of injury.

Mortar hose

	Danger of injury through leaking high-pressure hose. Wear and tear and links as well as usage that is not appropriate to the purpose of the device can cause leakages to form in the mortar hose. Liquid can be injected into the skin through a leakage.
--	--

Mortar hoses must be checked thoroughly before they are used.

Replace any damaged mortar hose immediately.

Never repair defective mortar hoses yourself!



Avoid sharp bends and folds: the smallest bending radius is about 80 cm.

Do not drive over the mortar hose. Protect against sharp objects and edges.

Never pull on the mortar hose to move the device.

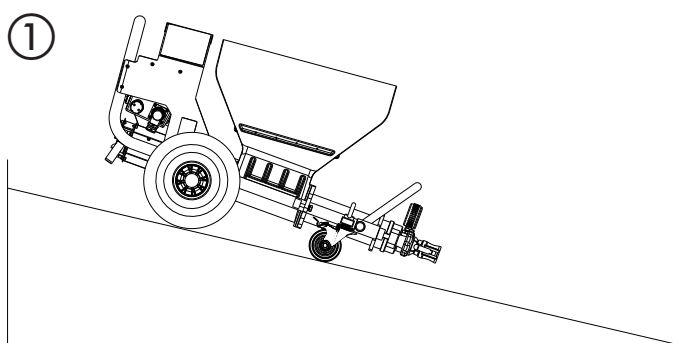
Do not twist the mortar hose.

Lay the mortar hose in such a way as to ensure that it cannot be tripped over.

	Only use WAGNER original-mortar hoses in order to ensure functionality, safety and durability.
	The risk of damage rises with the age of the mortar hose. Wagner recommends replacing mortar hoses after 6 years.

Setup on an uneven surface

The mortar spraying machine must be installed as shown in the diagram below to prevent it slipping. Block front wheels with brakes.



2 INTRODUCTION TO WORKING WITH THE MORTAR SPRAYING MACHINE PLASTCOAT1030

The suction pump PlastCoat 1030 is conceived for using and processing ready mixed mineral coating materials. The machine is not designed for use as a cleaning device.

2.1 FUNCTION OF THE MORTAR SPRAYING MACHINE PLASTCOAT 1030

The coating material is supplied by means of the container. The spiral conveyor feeds the coating material to the eccentric screw pump. The suction effect causes the coating material to enter the eccentric screw pump. This pump builds up the pressure required for transportation through the mortar hose. The compressed air required for atomisation is supplied at the spray lance. The mortar spraying machine can be switched on and off using the electric control. This can also be used to control the delivery volume.

A soft even spray pattern can be achieved by means of the smoothly regulated convey capacity of the coating material.

2.2 PROCESSIBLE COATING MATERIALS

- Thermal insulation composite system bonding agent (mineral and artificial resin systems)
- Artificial resin plasters up to 6 mm granular size
- Silicate plasters up to 6 mm granular size
- Silicone resin plasters up to 6 mm granular size
- Mineral final coats up to 6 mm granular size
- Lightweight plaster systems up to 6 mm granular size
- Scraped stucco up to 6 mm granular size
- Thermal insulation plasters
- Restoration plaster
- Porous concrete coating
- Quartz plastic
- Roof coatings
- Fire protection coatings
- Mineral sealing sludges
- Bitumen emulsions
- Armoring filler
- Liquid wood-chip wall paper
- Casement grouting mortar
- Artificial resin rendering base
- Wash primer
- Filling paint, also fibrous
- Elastic coating
- Acoustic plaster, artificial resin bonded
- Fillers, artificial resin bonded

All the coating materials must be suitable for machine processing. Refer to the product data sheet of the coating material to be processed.

Use other coating materials only after agreement with the manufacturer or the WAGNER application technology service.

3 TECHNICAL DATA

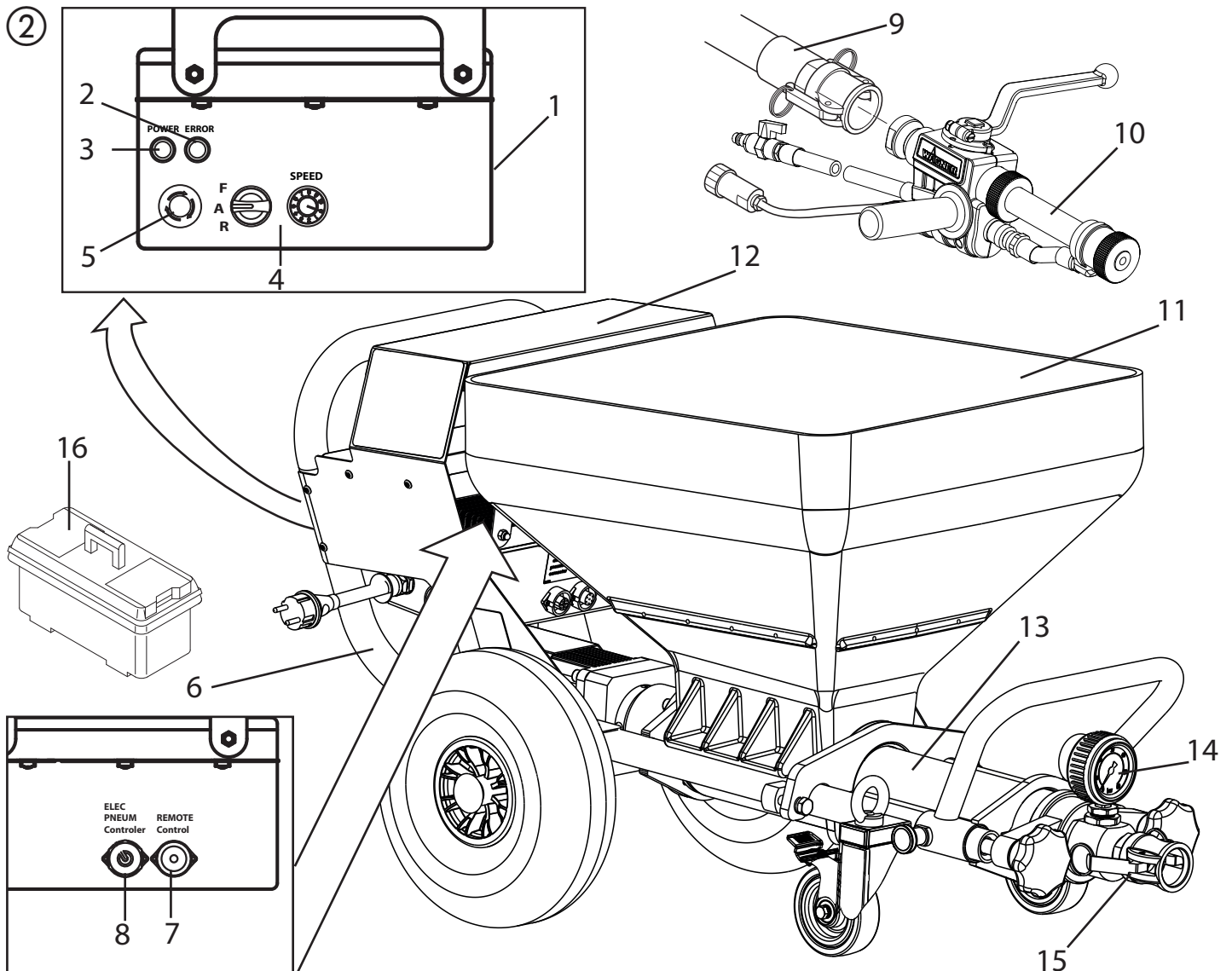
	PlastCoat 1030
Voltage:	230 V~, 50/60 Hz
Fusing:	16 A time-lag
Device supply cable:	5 m long, 3 x 2.5 mm ²
Motor output P ₁ :	2.3 kW
Max. convey capacity (water):	10, 15, 20 l/min (depending on the rotor/ stator)
Max. operating pressure:	40 bar
Max. granular size:	K6 mm
Dimensions L x W x H:	1150 x 550 x 620 mm
Container capacity:	50 l
Weight (PlastCoat 1030):	60 kg
Weight (Spray lance):	2.1 kg
Max. tyre pressure:	2.5 bar
Degree of protection:	IP 54
Max. sound pressure level:	70 dB (A)*
Atomizing air connection:	Rapid action coupling DN 7.2 mm
Max. atomizing air pressure:	10 bar
Minimum required compressed air volume:	320 l/min
Max. mortar hose length:	40 m (and 2.5 m hose whip)
Max. delivery height:	20 m

* Place of measurement: 1 m distance from unit and 1.60 m above reverberant floor.

EXPLANATORY DIAGRAM

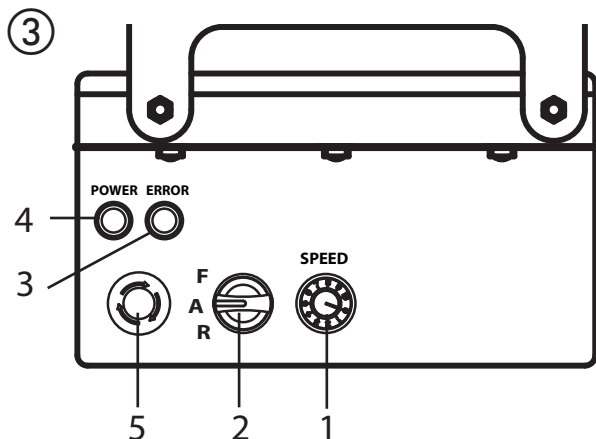
4 EXPLANATORY DIAGRAM FOR PLASTCOAT 1030

- | | |
|---|--|
| 1 Control unit | 2 Indicator light red (indicates the presence of a malfunction) |
| 3 Operating light green (indicates that mains voltage is present) | 4 Control panel with selector switch for operating mode and delivery volume controller |
| 5 EMERGENCY STOP switch | 6 Base frame with wheels |
| 7 Remote control connection | 8 External controller connection |
| 9 Mortar hose with air hose complete | 10 Spray lance |
| 11 Container | 12 Loading area |
| 13 Outlet unit with inside screw pump | 14 Manometer |
| 15 Connecting coupling for mortar hose | 16 Tool box |



4.1 OPERATING ELEMENTS AND DISPLAYS ON DEVICE

- 1 Delivery volume controller 0-10
- 2 Selector switch for operating mode
- 3 Indicator light (Error)
- 4 Operating light (Power)
- 5 EMERGENCY STOP switch



The delivery volume controller (Fig. 3, 1) is used to regulate the convey capacity from 0-10 smoothly.

The selector switch (Fig. 3, 2) offers the following modes:

<p>F</p> <p>A</p> <p>R</p>	<p>"A" position = automatic</p> <p>Basic setting for control with an automatic spray lance</p>
<p>F</p> <p>A</p> <p>R</p>	<p>"F" position = manual activation</p> <p>Switches on the mortar spraying machine.</p> <p>This setting is required for:</p> <ul style="list-style-type: none"> disassembling the pump unit
<p>F</p> <p>A</p> <p>R</p>	<p>"R" position = reverse gear</p> <p>This setting is required for:</p> <ul style="list-style-type: none"> relieving pressure on the mortar hose assembling the pump unit

Detailed explanation of selector switch use:

If the selector switch is in the "A" position, the PC 1030 can be switched on and off with the material shut-off on the automatic spray lance.

If there is no spray lance fitted (e.g.: assembly/disassembly the pump unit), the machine is switched on using the "F" switch position and off using the "A" position.



Important: control via the selector switch and material shut-off are treated equally. The machine can be switched from the "A" position (control using material shut-off) to "F" at any time. We would therefore recommend that only one person operate the machine.

The operating light (green, Fig. 3, 4) indicates that the machine is energised and ready.

When the mains plug is connected the PC 1030 carries out a function check. While this is going on the indicator light (red, fig. 3.3) flashes. If everything is in working order, the flashing stops after about 30 seconds. If the indicator light lights up during operation, this indicates that there is a malfunction. For detailed information about this kind of fault, refer to the „Rectification of faults" section on page 46.



If the selector switch is in the "F" position when the mains plug is plugged in, the machine will not switch on. Briefly move selector switch to "A" and then back to "F" to switch on the machine.

EMERGENCY STOP switch

When the EMERGENCY STOP switch is pressed, the PC 1030 is switched off immediately.

Turn the EMERGENCY STOP switch in order to release it again. The machine remains switched off after release. To switch it on again, the selector switch must be briefly set to "A" and then to "F".

4.2 DRIVE

When an overload occurs, the mortar spraying machine switches off automatically (red indicator light lights up).

Move selector switch (Fig. 3, 2) to "A" and disconnect mains plug. Set delivery volume controller (Fig. 3, 1) to „0".

Wait around 5 minutes, then plug the mortar spraying machine back in and switch on. Set the delivery volume required.

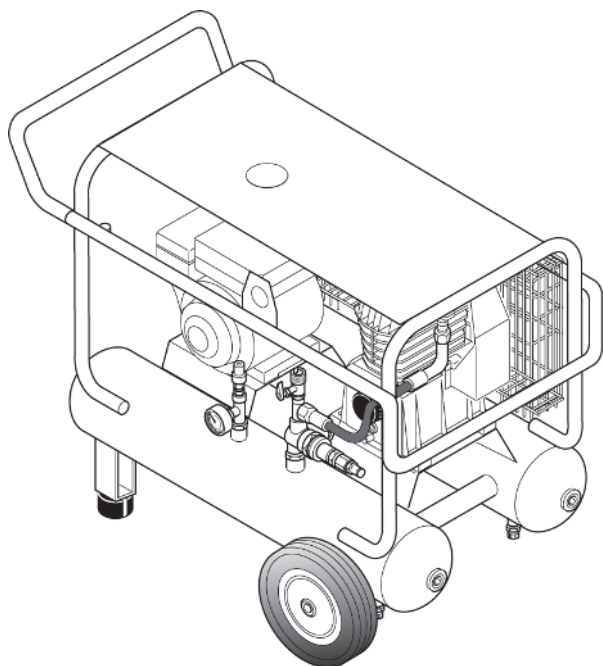


The drive unit heats up during operation. This is normal and not a sign of malfunction.

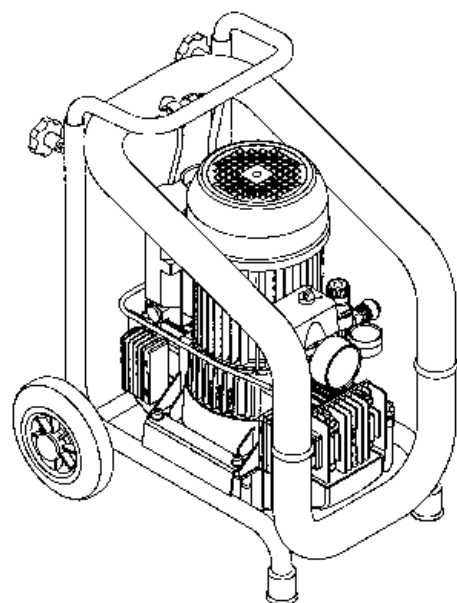
OVERVIEW

4.3 COMPRESSOR (ACCESSORY)**VKM 592 intake volume 590 l/min****Note:**

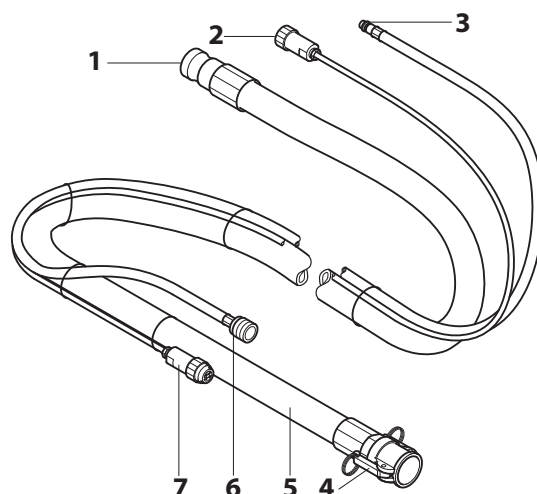
Only operate the compressor in accordance with the enclosed operating manual.

**C330 intake volume 330 l/min****Note:**

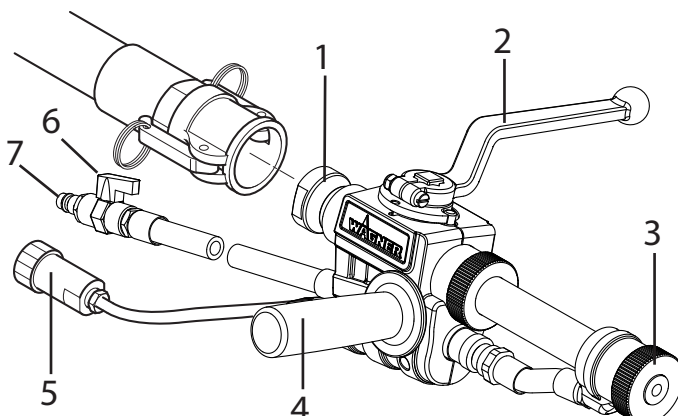
Only operate the compressor in accordance with the enclosed operating manual.

**4.4 MORTAR HOSE**

- 1 Material connection mortar spraying machine
- 2 Control cable connection / controller
- 3 Atomizing air connection compressed air supply
- 4 Material connection spray lance
- 5 Mortar hose
- 6 Atomizing air connection spray lance
- 7 Control cable connection

**4.5 SPRAY LANCE**

- 1 Material connection
- 2 Combined material and air tap:
Open: material tap at 90° to spray lance
Closed: material tap points forwards
- 3 Texture tip:
Various texture tips can be used in the spray lance. The tip size depends on the granular size of the coating material and the desired spray pattern.
- 4 Hand-grip:
The hand-grip can mounted to either the right or left side of the spray lance, depending on what is required. The thread on the other side can be closed by way of the attached stoppers for protection.
- 5 Control cable connection
- 6 Air flow regulator
- 7 Atomization air connection



5 TRANSPORTATION

5.1 MOVING

Wind power cable around handle and remove the hose.
Put away the nozzles and other small objects in the storage compartment.
Push or pull the PC 1030 by the handle.

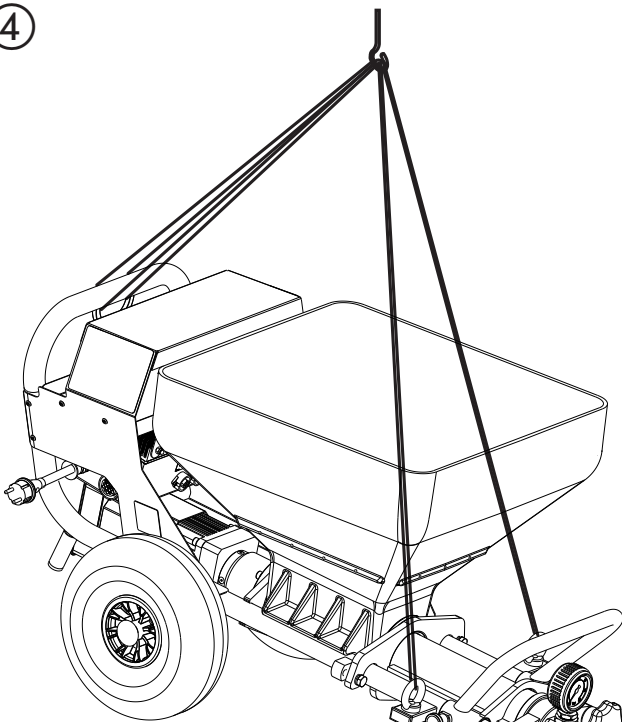


Make sure that 2 people are available to carry the device on stairs.

5.2 TRANSPORT USING A CRANE (FIG. 4)

For attaching points for the straps or rope (not wire cable) see figure.

④



5.3 TRANSPORTATION IN VEHICLE

Secure the unit in the vehicle by means of suitable fasteners.



To avoid material residues leaking from the machine, clean the device in advance or lock the mortar connection.

6 COMMISSIONING

6.1 INSTALLATION LOCATION

Position mortar spraying machine in a level position to prevent it from sliding away.

6.1.1 CONNECTION TO MAINS POWER SUPPLY/ EXTENSION CABLE

Connection to the mains network only via a special feeding point, for example via a distribution board for construction sites, with residual current protective device with INF ≤ 30 mA.



Lay the device supply cable so that there is no danger of stumbling.
Protect against damage, for example against being driven over.



Min. wire cross-section 3 x 2.5 mm². Unroll the extension cable completely. Ensure that the coupling pieces and plugs are free of damage.

- Before connecting the unit to the mains supply, ensure that the line voltage matches that specified on the rating plate.

6.2 INITIAL STARTING-UP

6.2.1 SCOPE OF SUPPLY

The machine is supplied by the manufacturer in the following individual components:

- Complete basic machine comprising drive unit, control unit, receptacle and transport frame with wheels
- Stator
- Hose package
- Spray lance
- Pump sliding means
- Tool box with nozzles, cleaning accessories,...

6.2.2 ASSEMBLY (FIG. 5)



Disconnect external controls. Assembly may only be carried out by the person who controls the machine. Never operate mortar spraying machine with an exposed rotor. Do not reach into the rotor when it is moving. Risk of crushing. Caution if you have long hair. Only wear close-fitting clothes at work.

Loosen the star screws (1) and remove the outlet unit (2).
Spray the stator (3) and rotor (4) with a suitable pump lubricant (order no. 9992 824).

Move selector switch (6) to „A“ and set delivery volume controller (7) to „0“.

Connect mains plug to mains power supply.

The operation light (8) shows operational readiness.

The red indicator light (9) flashes during the function check for about 30 seconds.

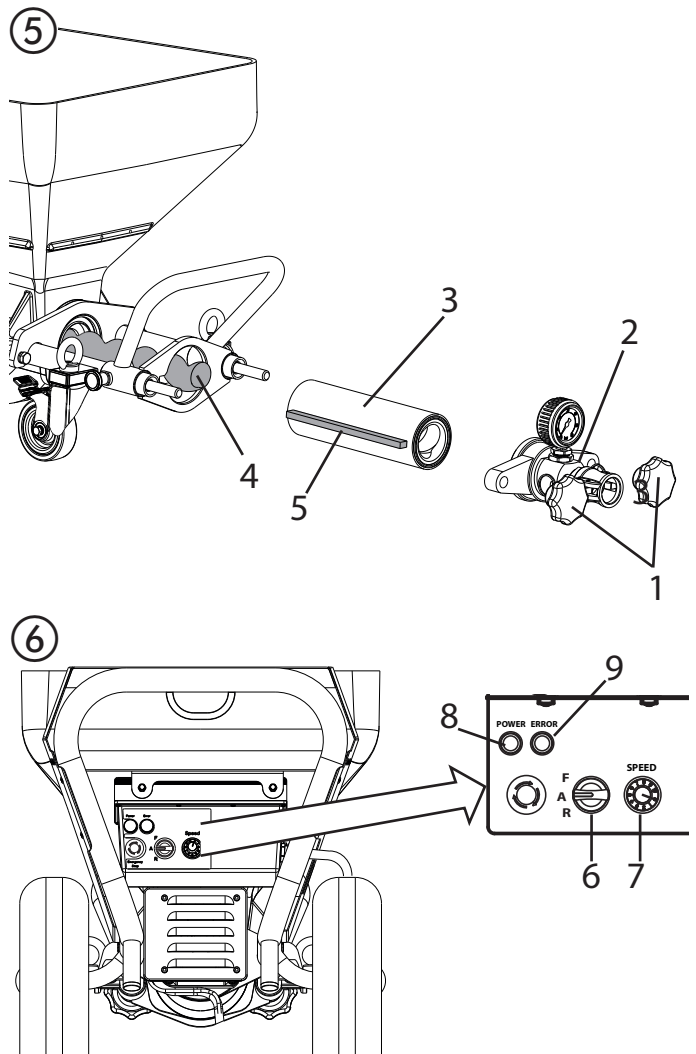
Set delivery volume controller (7) to 1 or 2.

Push the stator (3) over the tip of the rotor (4) (guide rail (5)).

Set the selector switch (6) to „R“ to push the stator automatically on to the rotor.

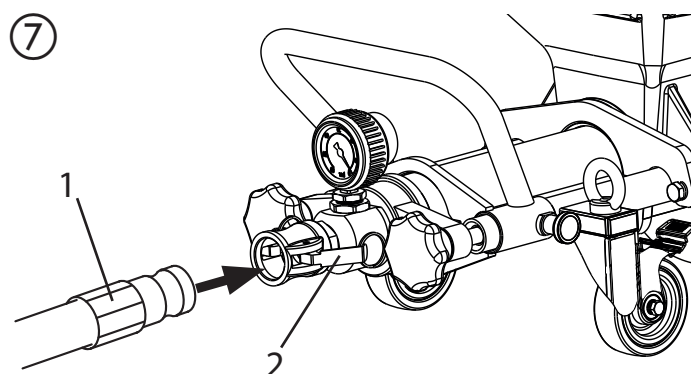
As soon as the stator is in end position, set the selector switch (6) to „A“.

Re-assemble the outlet unit (2) and tighten the star screws (1).



6.3 CONNECTING THE MORTAR HOSE

- Check that the pump unit is seated firmly.
- Connect the mortar hose (Fig. 7, 1) and secure it with the clamping levers (Fig. 7, 2).
- Connect the atomizing air connection at the mortar hose to the compressed air supply, for example the compressor (accessory).



6.4 COMPRESSOR (ACCESSORY)

Place the compressor at a secure location next to the mortar spraying machine and connect it to the mains network.

Note:

Only operate the compressor in accordance with the enclosed operating manual.

6.5 SPRAY ATTACHMENT ASSEMBLY (ACCESSORIES)



Different accessories can be mounted to the spray lance, depending on the application, e.g. an extension can be attached. A precise overview can be found in the "Accessories" chapter.

- Disengage the quick connector and pull the air hose (fig. 8, 1) out of the lance.
- Loosen the locknut (2) and remove the material hose (3).
- Insert the material hose and air hose (if available), which are part of the accessory, into the spray lance and secure by tightening the locknut. (Fig. 9)

Attention: Make sure the O-ring (fig. 9, 4) is not damaged.

6.6 CONNECTING THE SPRAY LANCE (FIG. 10)

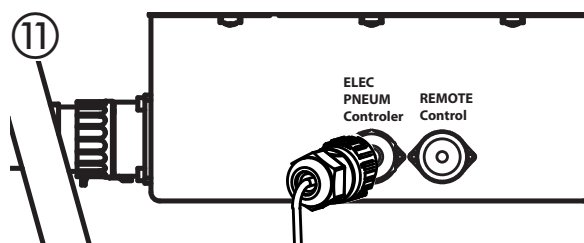
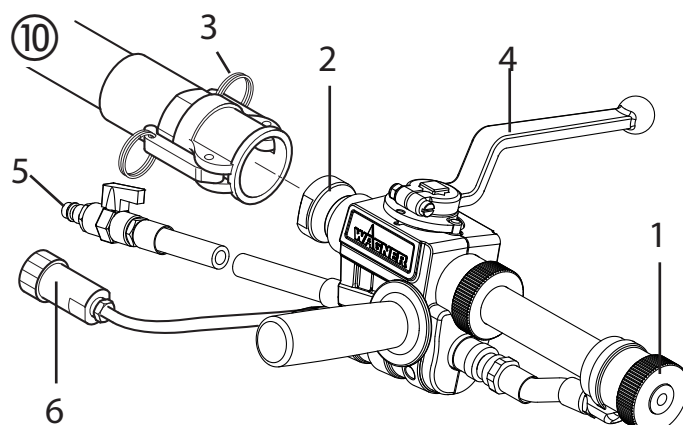
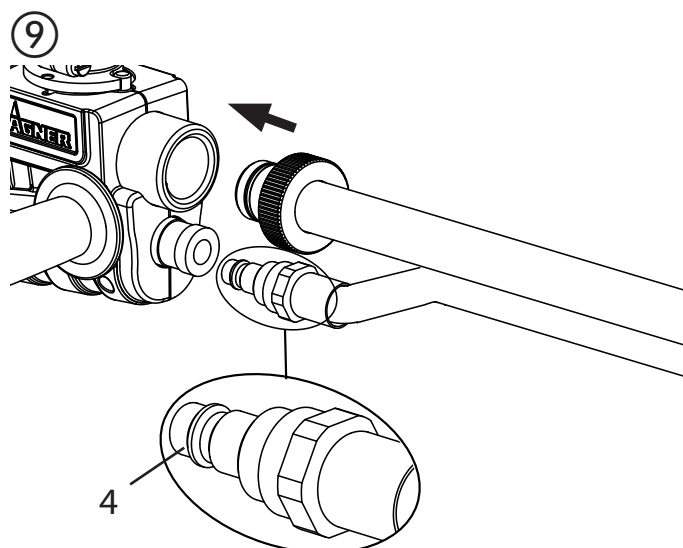
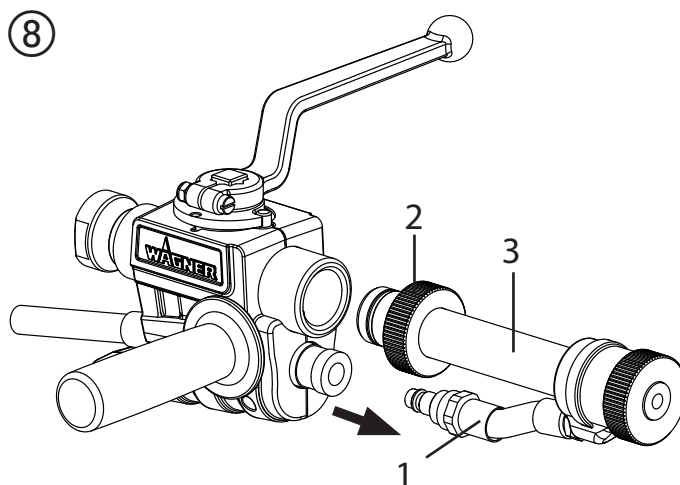
- Select a spray tip suitable for the material:

The tip size should amount to at least three times the granular size, e.g.

granular size artificial resin plasters → 3 mm

Tip size → 10 mm

- Mount the texture tip (1) in the spray lance with the cone pointing towards the spray head.
- Connect the spray lance (2) to the material hose and secure by applying the levers (3).
- Close the material tap (4) (material tap points forwards).
- Connect atomization air connection (5) to the air hose of the mortar hose.
- Screw coupling plug (6) for remote control to the control cable of the mortar hose.
- Connect mortar hose's control cable to pump connection. (Fig. 11)
- Set selector switch to "A".



6.7 PREPARING THE MORTAR SPRAYING MACHINE (FIG. 12)

Recommended sliding means for the mortar hose



Water is not sufficient as a sliding means.
Danger of clogging!
Use cellulose paste (e.g. Metylan wallpaper paste, art no. 2312136)

- Fill 2–3 l cellulose paste into the container.
- Connect the mortar spraying machine to the mains supply.
The operation light (1) shows operational readiness.



Risk of injury from escaping material.
Before switching on, always check that the material tap on the spray lance is closed (material tap points forwards).
Close material tap whenever stopping work.

- Set selector switch (2) to "A".
- Set delivery volume controller (3) to „3“.

6.7.1 RINSE THE MORTAR HOSE

- Close the air flow regulator (fig. 13.2).



Do not bend the mortar hose!
Protect it against damage, for example against being driven over as well as against sharp objects and edges.

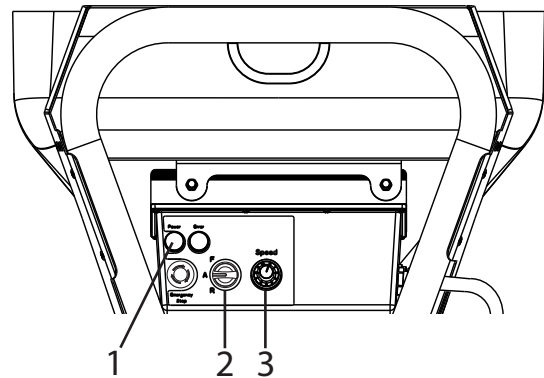
- Hold spray lance over an empty bucket.
- Open material tap (Fig. 13, 1) on spray lance (material tap at 90° to spray lance), the mortar spraying machine is switched on.
- If cellulose paste comes out of the tip, close the material tap (fig. 13, 1) (material tap points forwards).
- Fill coating material into the receptacle.



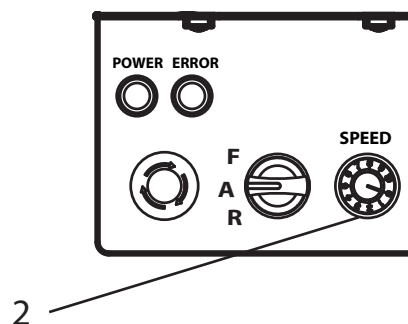
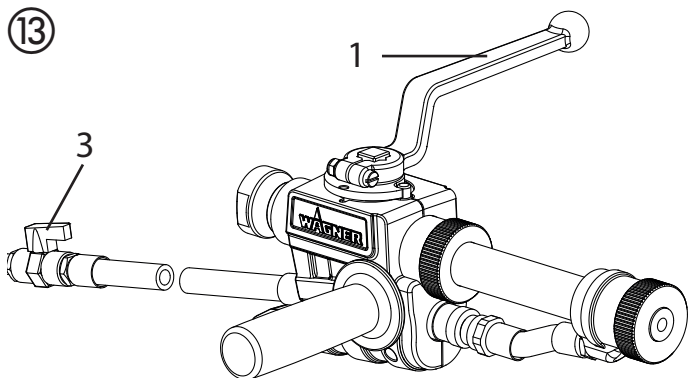
With mineral coating materials only fill the receptacle to half full.

- Position the spray lance over the bucket again.
- Replace container and lubricant with container and coating material.
- Hold spray lance above container with cellulose paste.
- Open material tap (Fig. 13, 1) on spray lance.
- As soon as coating material exits from spray lance, close material tap (Fig. 13, 1).
The mortar spraying machine is now full and ready.

⑫



⑬



6.8 BEGINNING OF THE SPRAYING PROCESS

- Open the air flow regulator (fig. 13, 3) and the material tap (13, 1) at the spray lance.
- Adjust the flow of material with the delivery volume controller (fig. 13, 2) on the control unit and set the air quantity by adjusting the air flow regulator (fig. 13, 3) to attain the desired spray pattern.



Important: Do not let the mortar spraying machine run dry. Switch the device off immediately if no more material comes out of the tip or if the spray line becomes irregular. Possible reasons for the problem and how to correct it can be found in the chapter called „Eliminating faults“.



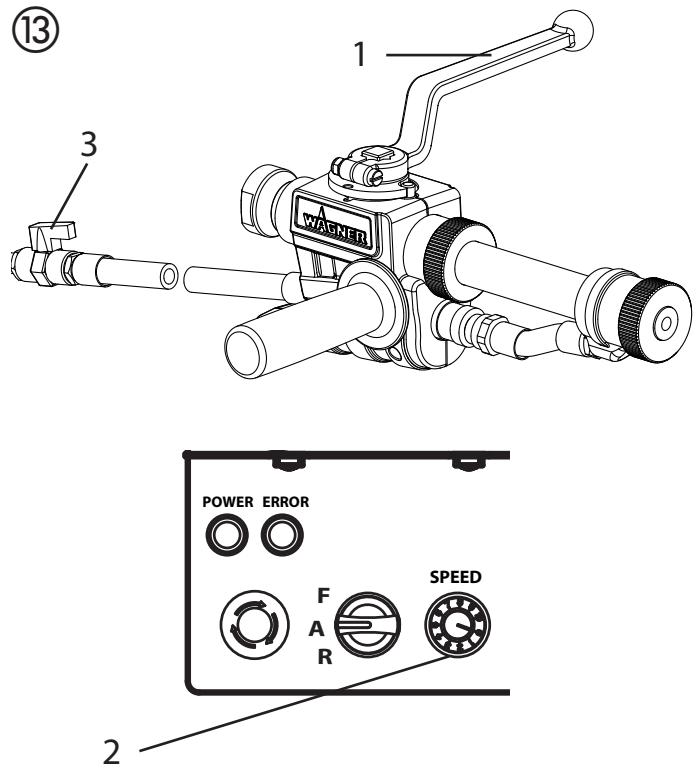
Increased material tap wear. Do not use the material tap to set the material volume. The delivery volume controller should be used for this purpose.

6.9 END OF THE SPRAYING PROCESS

- Close the material tap (Fig. 13, 1).
- Close the air flow regulator (fig. 13, 3).



Always close material tap at end of the spray process.



7 GENERAL INFORMATION ABOUT THE APPLICATION TECHNIQUE

7.1 SPRAYING TECHNIQUE

While spraying hold the spray lance at a uniform distance of 30 – 60 cm from the object. Otherwise the spray pattern will be uneven.

The spray pattern depends on the coating material, viscosity, tip size, convey capacity and amount of atomizing air.

Examples:

Fine texture → large amount of atomizing air
Rough texture → small amount of atomizing air
Higher convey capacity → larger amount of atomizing air

Test the desired texture on a test surface.

The lateral limit of the spray jet should not be too sharp. The distance between the spray lance and the object should therefore be selected correspondingly.

The spray edge should be gradual in order to facilitate overlapping of the next coat.

If the spray lance is moved parallel and at an angle of 90° to the surface to be coated, the paint mist is minimized.

Note:

Grains and pigments with a sharp edge result in a high rate of wear of the pump, mortar hose, material tap and tip.



When using the mortar hose while working on scaffolding, it is best to always guide the hose along the **outside** of the scaffolding.

8 SHUTTING DOWN AND CLEANING



Do not clean the motor and control unit of the mortar spraying machine moistly. And certainly do not spray down the unit with high-pressure cleaners or high-pressure steam cleaners. Danger of short-circuits caused by water ingressing.

8.1 CLEANING THE MORTAR HOSE

- Pump until receptacle is empty.



Important: Do not let the mortar spraying machine run dry. Switch the device off immediately if no more material comes out of the tip or if the spray line becomes irregular. Possible reasons for the problem and how to correct it can be found in the chapter called „Eliminating faults“.

- Switch off mortar spraying machine and compressor.
- Close material tap on spray lance.
- Remove the texture tip from the spray lance and clean it.
- Put water in the container and hold the spray lance over an empty bucket.

Important: Do not let the mortar spraying machine run dry. During the cleaning process, ensure that there is always enough water in the container.

- Set delivery volume controller to „5“.
- Open material tap on spray lance.
- Pump material out of hose into container until the material exiting the hose is just a thin liquid.
- Close material tap on spray lance.



The mortar hose must be pressureless. If necessary, set the selector switch briefly to “R” (reverse). Watch the manometer → 0 bar. Wear safety goggles.

- Decouple mortar hose from pump unit.
- Decouple spray lance from mortar hose.
- Insert cleaning ball into mortar hose and reconnect mortar hose
- Set selector switch to “F”.
- After a few seconds the cleaning ball is emitted from the spray lance.
- Depending on the processed coating material, repeat the cleaning process 3 – 4 times.



The mortar hose must be pressureless. If necessary, set the selector switch briefly to “R” (reverse). Watch the manometer → 0 bar. Wear safety goggles.

- Set selector switch to “A”.
- Decouple mortar hose from pump unit.



A further cleaning option is to use the cleaning adapter (accessory). This cleaning adapter can be connected to a water hose or a tap by means of the claw coupling. Insert cleaning ball into the mortar hose. Couple the mortar hose to the cleaning adapter and rinse through with water.

8.2 CLEANING THE DEVICE AND REPLACING THE STATOR

- Clean mortar spraying machine.
To do so, pump a suitable pump lubricant or water mixed with washing-up liquid through the pump.

Dismantling

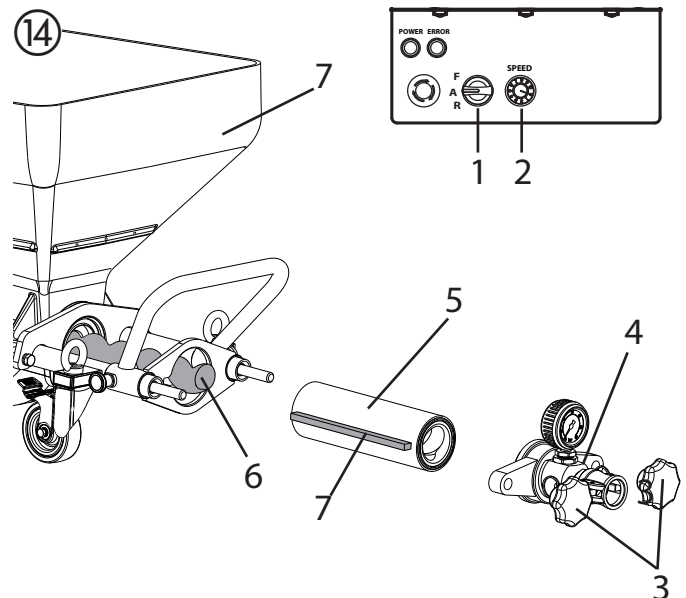


Mortar spraying machine must be depressurised.
If necessary, set the selector switch briefly to "R" (reverse).
Watch the manometer --> 0 bar.
Wear safety goggles.



Disconnect external controls. Disassembly may only be carried out by the person who controls the machine.
Never operate mortar spraying machine with an exposed rotor.
Do not reach into the rotor when it is moving. Risk of crushing.
Caution if you have long hair. Only wear close-fitting clothes at work.

- Move selector switch (fig. 14, 1) to "A" and set delivery volume controller (2) to „0“.
- **Disconnect mains plug.**
- Loosen the star screws (3) and remove the outlet unit (4).
- Set delivery volume controller (2) to 1 or 2.
- **Connect mains plug to mains power supply.**
- Move the selector switch (1) to position „F“. As soon as the stator (5) is released from the rotor (6), set the selector switch to „A“.
- Remove the stator (5) completely.
- **Disconnect mains plug.**



Clean the outlet unit

Clean the outlet unit (4) with a jet of water and a suitable bottle brush.

Clean the container (7) with a jet of water and a suitable brush.
 Clean the protective grid with a radiator brush.

Also clean the rotor (6) and stator (5) thoroughly with water and, if necessary, using a brush.

Then spray rotor (6) and stator (5) and with a suitable pump lubricant.

Keep the thread of the pump housing and the pump tube clean so that leaking after the assembly is avoided.

Mounting

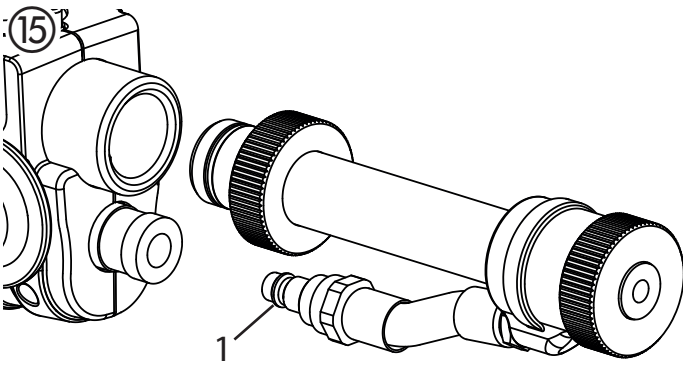


If the machine is down for a longer period of time, the stator can become set at the rotor. Therefore, if the stator has been in storage for a longer period of time, do not mount it until you are about to begin work.

Assembly, see chapter 6.2.2

8.3 CLEANING THE SPRAY LANCE

- Clean the texture tip.
- Use cleaning needles to clean the air holes in the texture tip.
- Clean and lubricate the O-ring (fig. 15, 1).
- Clean the spray lance and material tube on the inside using a bottle brush (0342 329).
- Clean all threads thoroughly.
- Rinse the spray lance with clear water. Open and close the material tap three times as you are doing this.



9 MAINTENANCE



ATTENTION! It is imperative that the machine be deenergized by unplugging the plug before all work and maintenance work. Otherwise there is a danger of short-circuiting! Repairs may only be carried out by qualified personnel who dispose the corresponding training and experience. The device must be tested by a skilled electrician after every repair.

The mortar spraying machine is designed so that a minimum of care and maintenance is required. However, the following work has to be carried out and components checked regularly:

9.1 MECHANICAL MAINTENANCE

- Keep the thread at the pump tube and pump housing clean and, if appropriate, seal.
- Check the seals at all the couplings and connecting pieces for leaks. If appropriate, replace worn seals.
- Check the following for damage before every usage:
 - Mortar hose
 - Power cable
 - Control unit

9.2 ELECTRICAL MAINTENANCE

- The electrical drive and its ventilation slots must always be kept clean and may not be cleaned with water. **Danger of short-circuits.**

9.3 LONG PERIODS OF NON-USAGE

If the mortar spraying machine is not used for a longer period, it has to be cleaned thoroughly and protected against corrosion.



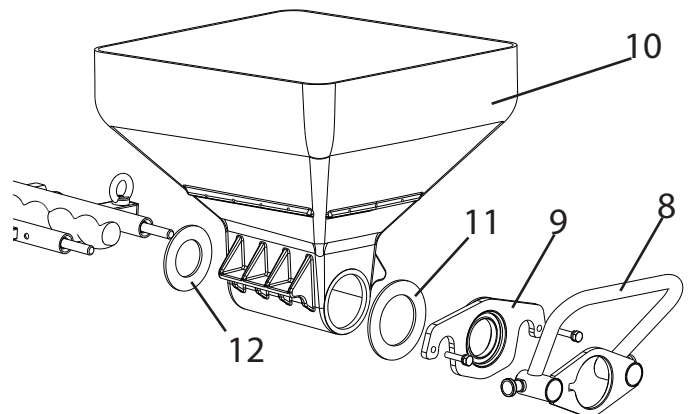
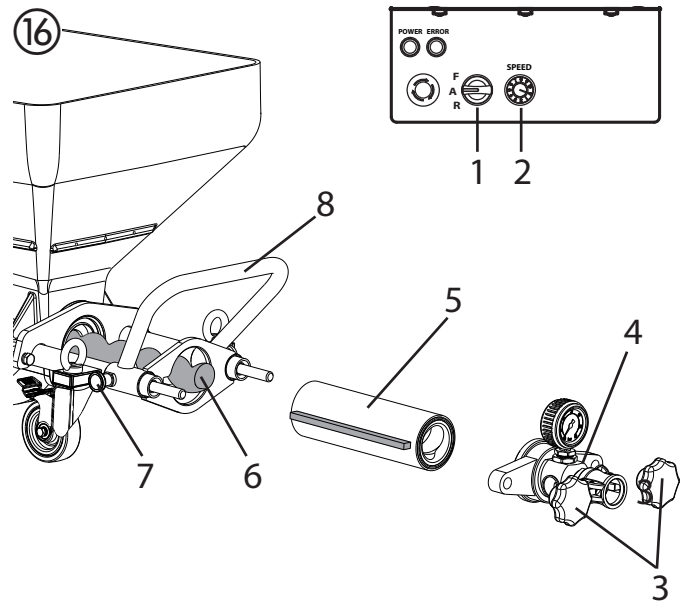
Take the stator out of the pump unit so that it cannot get stuck to the rotor.

9.4 SHAFT SEAL (FIG. 16)



Check the seals on the PC 1030 every month.

- Move selector switch (fig. 16, 1) to "A" and set delivery volume controller (2) to „0“.
- **Disconnect mains plug.**
- Loosen the star screws (3) and remove the outlet unit (4).
- Set delivery volume controller (2) to 1 or 2.
- **Connect mains plug to mains power supply.**
- Move the selector switch (1) to position „F“. As soon as the stator (5) is released from the rotor (6), set the selector switch to „A“.
- Remove the stator (5) completely.
- **Disconnect mains plug.**
- Pull out the two locking pins (7) and remove the anti-twist lock (8).
- Remove the flange (9) with a 17-wrench.
- Remove the container (10).
- Check the seal (11) and replace if necessary.
- Clean the shaft seal (12).
- Check the rotor (6) and replace if necessary (see chapter 9.5).

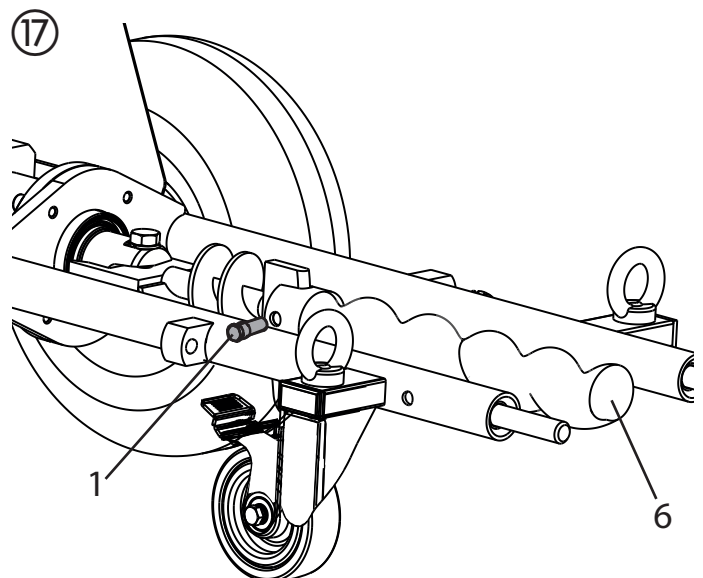


9.5 ROTOR REPLACEMENT (FIG. 17)


- Loosen fixing screw (1) and remove old rotor (6).
- Fit new rotor with new fixing screw.
- Glue fixing screw with Loctite 243.




Note: use Loctite 243 only.




10 ELIMINATING FAULTS

MALFUNCTION	POSSIBLE CAUSE	ELIMINATION
Mortar spraying machine not running. Green operating light lights up	Delivery volume controller is set to „0“ Lance control cable not connected or damaged	Increase delivery volume Check control cable
Mortar spraying machine not running. Green operating light not does not light up	Power supply missing.	<ul style="list-style-type: none"> - Plug in the power plug. - Check the power cable for damage and replace, if necessary. - Check the power supply.
Mortar spraying machine not running. Red indicator light lights up	Mortar spraying machine was over-loaded/overheated.	Close material tap and disconnect mains plug. Switch the mortar spraying machine on again after about 5 minutes.
Mortar spraying machine cannot rotate the rotor	Rotor stuck in stator. Pump was not lubricated with pump sliding means.	Set the selector switch alternatively briefly to "F" (forwards) – "R" (reverse). Contact Wagner customer service if the problem cannot be resolved.
Mortar spraying machine builds up pressure in the mortar hose. However, coating material does not arrive at the spray lance.	Coating material "plug" in the mortar hose. Mortar hose not prerinsed with cellulose paste.	<p>Depressurize the mortar hose – set the selector switch to "R" (reverse). Pump the coating material back into the container.</p> <div data-bbox="922 1243 1485 1379">  <p>The mortar hose must be pressureless. Watch the manometer --> 0 bar. Wear safety goggles.</p> </div> <p>Decouple mortar hose and rinse with water hose. When the plug has been removed, fill cellulose paste in the mortar hose. Couple the mortar hose back on.</p>

MALFUNCTION	POSSIBLE CAUSE	ELIMINATION
Coating material is suddenly not emitted during spraying.	<p>Texture tip is clogged because of impurity in the coating material or because the granular size is too large.</p> <p>Texture tip too small.</p> <p>Coating material "plug" in the mortar hose. Mortar hose not prerinsed with cellulose paste.</p> <p>No coating material in the container. Pump has sucked in air.</p>	<p>Switch the mortar spraying machine off. Close the material cock at the spray lance. Remove the texture tip and clean it.</p> <p>Select a larger texture tip. Rule of thumb: Granular size x 3 → Tip size</p> <p>Depressurize the mortar hose – set the selector switch to "R" (reverse). Pump the coating material back into the container.</p> <div data-bbox="954 851 1519 990">  <p>The mortar hose must be pressureless. Watch the manometer → 0 bar. Wear safety goggles.</p> </div> <p>Decouple mortar hose and rinse with water hose. When the plug has been removed, fill cellulose paste in the mortar hose. Couple the mortar hose back on.</p> <p>Refill the container with coating material and pump it around until the coating material emerges without any bubbles. Attention: Always top up with sufficient coating material. Do not let the pump run dry. Pump overheats, resulting in a danger of „plugs“.</p>
Spray pattern is not clean and even.	<p>Air ducts in the texture tip are partially closed with coating material.</p> <p>Air volume incorrectly set.</p> <p>Poor mortar spraying machine cleaning</p> <p>No coating material in the container. Pump has sucked in air.</p>	<p>Switch the mortar spraying machine off. Close the material tap at the spray lance. Remove the texture tip. Clean the air ducts of the texture tip.</p> <p>Change air volume setting.</p> <p>Thoroughly clean mortar spraying machine</p> <p>Refill the container with coating material and pump it around until the coating material emerges without any bubbles. Attention: Always top up with sufficient coating material. Do not let the pump run dry. Pump overheats, resulting in a danger of „plugs“.</p>

ELIMINATING FAULTS

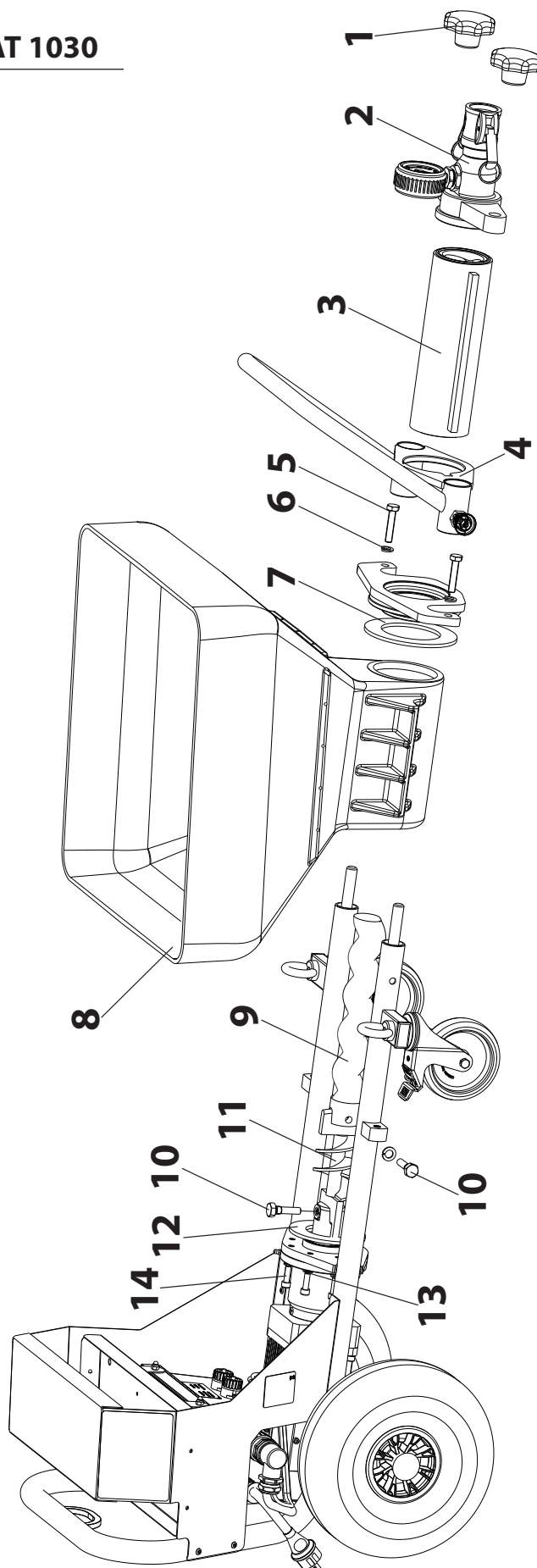
MALFUNCTION	POSSIBLE CAUSE	ELIMINATION
Pressure at the manometer rises to more than 40 bars.	<p>Viscosity of the coating material too high. Mortar hose diameter too small.</p> <p>Mortar hose is too long.</p> <p>Coating material "plug" in the mortar hose. Mortar hose not prerinsed with cellulose paste.</p>	<p>Dilute the coating material.</p> <p>Use a mortar hose with a larger diameter.</p> <p>Use a shorter mortar hose.</p> <p>Depressurize the mortar hose – set the selector switch to "R" (reverse). Pump the coating material back into the container.</p> <div data-bbox="922 739 1489 878">  <p>The mortar hose must be pressureless. Watch the manometer --> 0 bar. Wear safety goggles.</p> </div> <p>Decouple mortar hose and rinse with water hose. When the plug has been removed, fill cellulose paste in the mortar hose. Couple the mortar hose back on.</p>
Mortar spraying machine does not pump enough coating material.	<p>Convey capacity selected too low.</p> <p>Mortar hose diameter too small.</p> <p>Stator worn.</p> <p>Texture tip too small.</p>	<p>Set the volume regulator higher.</p> <p>Use a mortar hose with a larger diameter.</p> <p>Mount a new stator, if necessary, also a new rotor. Attention: Spray on pump sliding means.</p> <p>Select a larger texture tip. Rule of thumb: Granular size x 3 --> Tip size</p>

If the defect is not caused by one of the above-mentioned faults, have the defect eliminated by the WAGNER customer service.

11 SPARE PARTS LIST FOR PLASTCOAT 1030

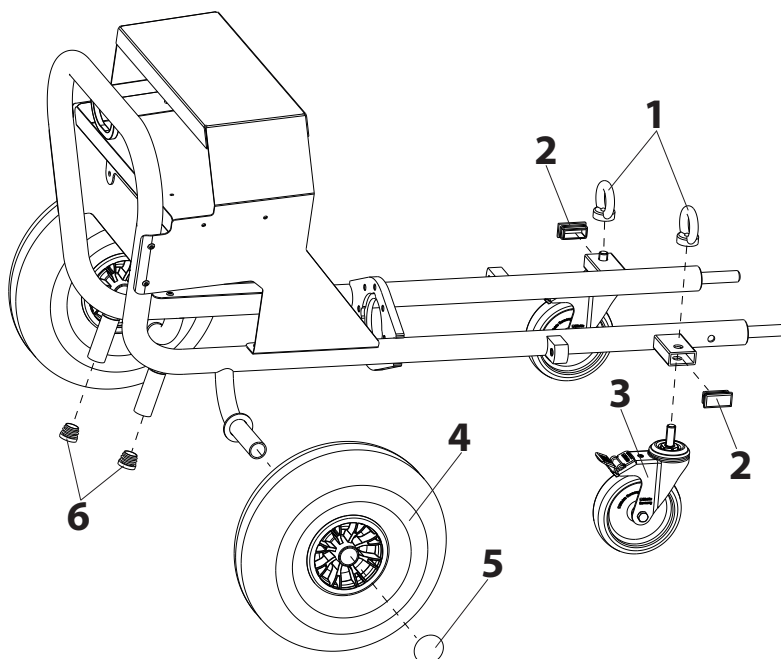
ITEM	ORDER NO.	DESIGNATION
8	2357594	Receptacle
9	348316	Rotor
10	348324	Screw
11	2360651	Feeder shaft
12	2360706	Rubber seal, motor
13	9921501	Spring washer
14	9900313	Cylinder head screw

ITEM	ORDER NO.	DESIGNATION
1	9990368	Star knob nut
2	2362368	Outlet unit cpl.
3	348315	Pump casing
4	2361120	Anti-twist lock for stator
5	9900247	Hexagon head screw
6	9921507	Spring washer
7	2360707	Rubber seal, flange



11.1 SPARE PARTS LIST FRAME

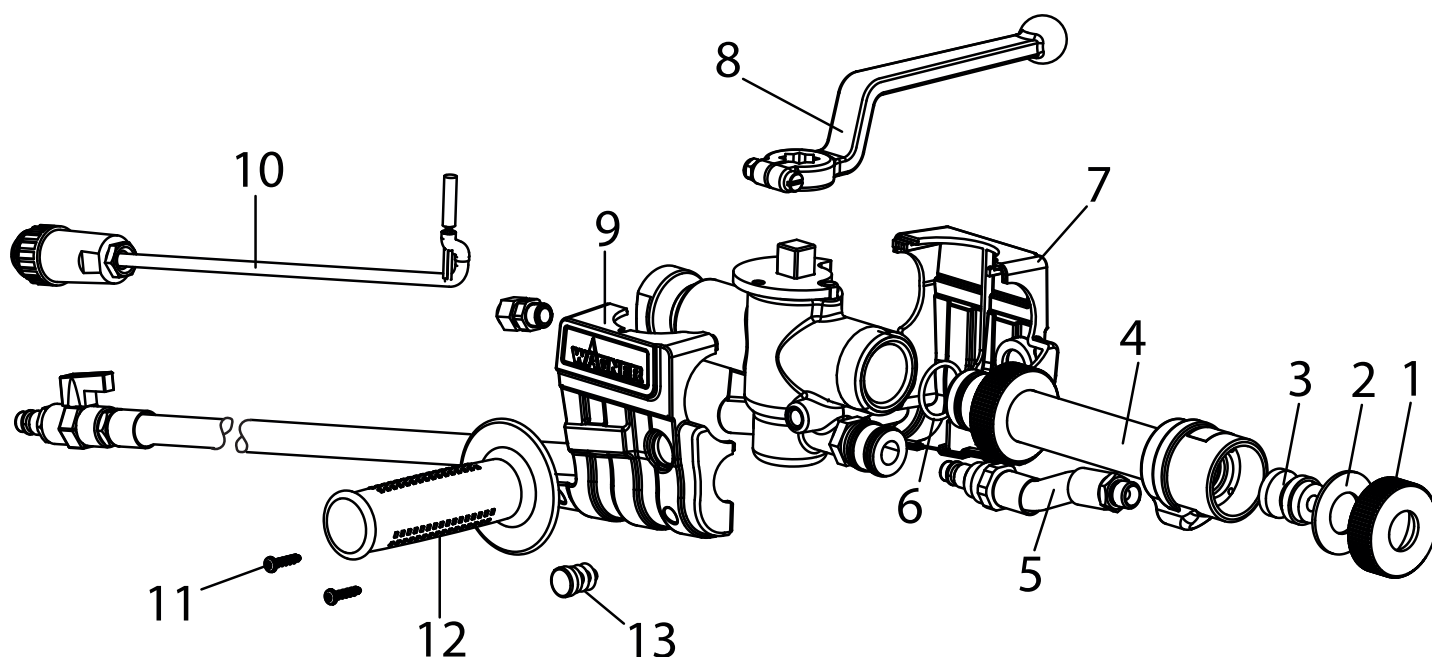
ITEM	ORDER NO.	DESIGNATION
1	3142039	Ring nut M12
2	3069013	Square head plug
3	2367604	Guide pulley
4	348349	Wheel
5	9994902	Wheel cap
6	2309787	Protective cap



12 SPARE PARTS LIST – SPRAY LANCE

ITEM	PART NO.	DESIGNATION
	2334 115	Automatic spray lance
	2322 199	Complete spray head (composed of positions 1-6)
1	2321 045	Union nut
2	0342 350	Sealing washer
3	0268 781	Texture tip 8 (standard)
6	2322 488	O-ring 25 x 2,5

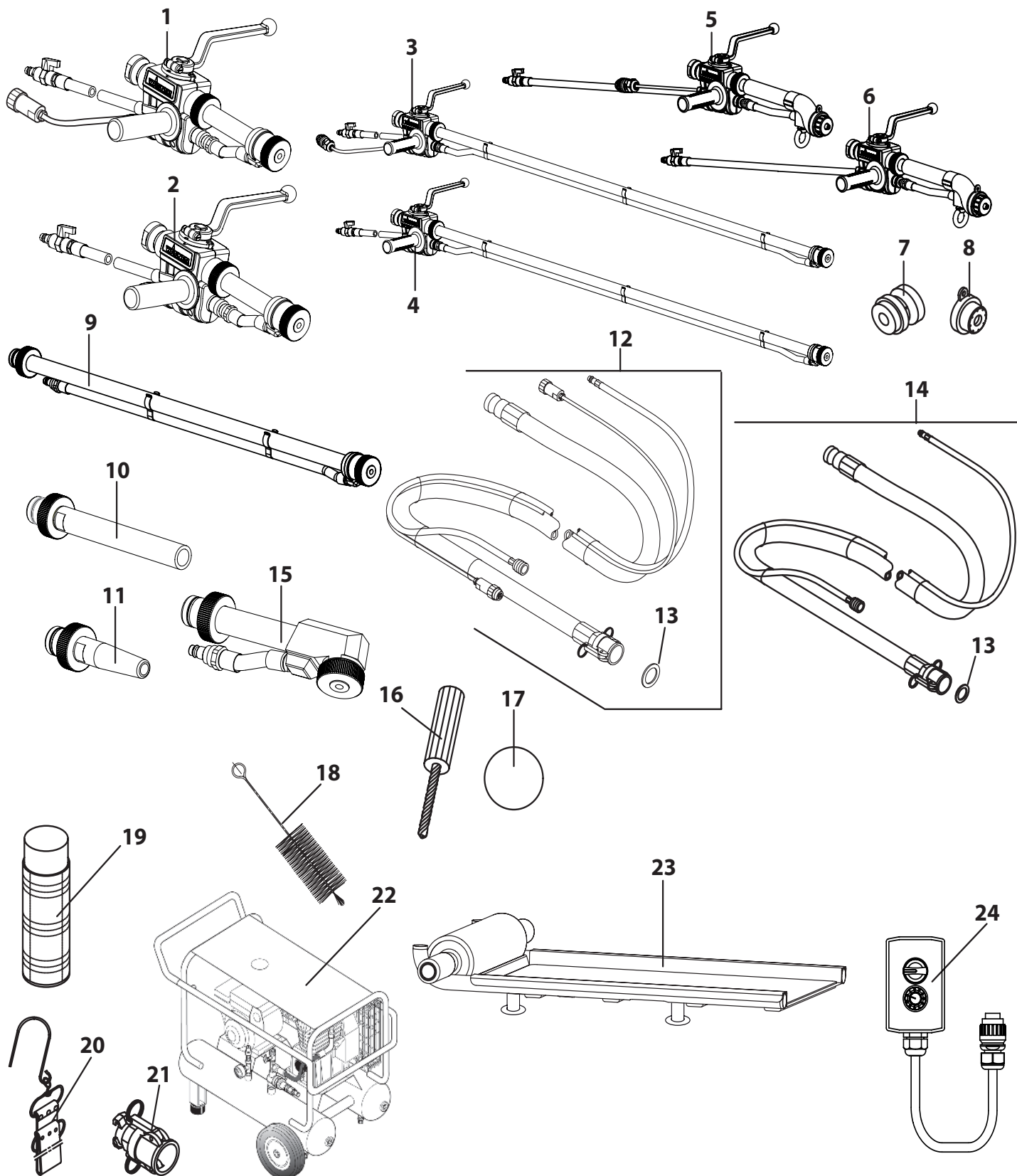
ITEM	PART NO.	DESIGNATION
7	2323 764	Housing component, left
8	2319 220	Lever
9	2323 782	Housing component, right
10	0348 216	Reed sensor, cpl.
11	2336 554	Oval-head screw (2)
12	2324 716	Hand-grip
13	2336 221	Stoppers (2)



13 PLASTCOAT 1030 ACCESSORIES

ITEM	PART NO.	DESIGNATION	ITEM	PART NO.	DESIGNATION
1	2334 115	Automatic spray lance	10	0342 314	Fix coupling seal M 27
2	2334 120	Ceiling spray lance (150 cm)	11	2337 672	Angled spray head
3	2334 121	Rendering lance	12	0342 916	Cleaning needle
4	Texture tips for automatic spray lance and ceiling spray lance:		13	0342 330	Cleaning ball for DN 19
	0268 779	Texture tip 4		0342 331	Cleaning ball for DN 27
	0348 915	Texture tip 5		0342 332	Cleaning ball for DN 35
	0268 780	Texture tip 6	14	0342 329	Bottle brush for cleaning the inside of the outlet unit and spray lance
	0348 916	Texture tip 7	15	9992 824	Pump sliding means 500 ml
	0268 781	Texture tip 8 (standard)	16	0342 215	Hose holder
	0348 917	Texture tip 9	17	0342 241	Cleaning adapter M 27 – GK
	0268 782	Texture tip 10		0348 948	Cleaning adapter M 35 – GK
	0342 327	Texture tip 12	18	2311 921	Compressor VKM 592, 230 V~, 50 Hz, suction volume 590 l/min
	0342 328	Texture tip 15	19	2337 718	Compressor C330, 230 V~, 50 Hz, suction volume 330 l/min
	0268 905	Texture tip set 4, 6, 8, 10	20	2311 692	Control cable for automatic spray lance 14 m (no picture)
5	2362 235	Rendering tip 10	21	2312 136	Lubricant for mortar hose (Metylan wallpaper paste) 125g (no picture)
	2362 236	Rendering tip 12			
	0268 746	Rendering tip 14			
	0268 747	Rendering tip 16			
	0268 748	Rendering tip 18			
	0268 726	Rendering tip set 14, 16, 18			
6	2334 123	80-cm extension			
	2339 400	150-cm extension			
	2334 124	200-cm extension			
7	2335 394	Glue attachment			
8	2335 388	Fill/dosing attachment			
9	Mortar hose (including air hose and control cable) for automatic spray lance (2334115, 2334120, 2334121)				
	2334 131	Mortar hose DN 19 – 2 m, Connection V 27			
	0342 706	Mortar hose DN 19 – 10 m, Connection V 27			
	0348 930	Mortar hose DN 19 – 20 m, Connection V 27			
	0348 912	Mortar hose DN 27 – 10 m, Connection V 27			
	0348 946	Mortar hose DN 35 – 13,3 m, Connection V 27			

PlastCoat 1030 Accessories illustration



TESTING OF THE MORTAR SPRAYING MACHINE

For safety reasons, we would recommend having the device checked by an expert as required but at least every 12 months to ensure that it can continue to operate safely.

In the case of unused devices, the check can be postponed until they are next started up.

All (potentially deviating) national inspection and maintenance regulations must also be observed.

If you have any questions, please contact the customer service team at Wagner.

NOTE ON DISPOSAL

In accordance with European Directive 2002/96/EC on the disposal of waste electrical equipment and its implementation in national law, this product may not be disposed of with the household refuse, but must rather be recycled in an environmentally correct manner.



Your waste WAGNER device will be taken back by us or our representatives and disposed of environmentally correctly. Please contact one of our service points or one of our representatives or us directly to this purpose.

IMPORTANT INFORMATION ON PRODUCT LIABILITY

According to an EU directive, the manufacturer is only liable without limitation for faults in the product if all parts come from the manufacturer or have been approved by the manufacturer and have been mounted to the device and are operated properly. If third-party accessories or spare parts are used, the manufacturer is exonerated wholly or partly from his/her liability if use of the third-party accessories or spare parts have caused a defect in the product. In extreme cases, the relevant authorities can completely prohibit using the entire device.

With original WAGNER accessories and spare parts, compliance with all safety regulations is guaranteed.

GUARANTEE DECLARATION

(Status 01.02.2009)

1. Scope of guarantee

All Wagner professional colour application devices (hereafter referred to as products) are carefully inspected, tested and are subject to strict checks under Wagner quality assurance. Wagner exclusively issues extended guarantees to commercial or professional users (hereafter referred to as "customer") who have purchased the product in an authorised specialist shop, and which relate to the products listed for that customer on the Internet under www.wagner-group.com/profi-guarantee.

The buyer's claim for liability for defects from the purchase agreement with the seller as well as statutory rights are not impaired by this guarantee.

We provide a guarantee in that we decide whether to replace or repair the product or individual parts, or take the device back and reimburse the purchase price. The costs for materials and working hours are our responsibility. Replaced products or parts become our property.

2. Guarantee period and registration

The guarantee period amounts to 36 months. For industrial use or equal wear, such as shift operations in particular, or in the event of rentals it amounts to 12 months.

Systems driven by petrol or air are also guaranteed for a 12 month period.

The guarantee period begins with the day of delivery by the authorised specialist shop. The date on the original purchase document is authoritative.

For all products bought in authorised specialist shops from 01.02.2009 the guarantee period is extended to 24 months providing the buyer of these devices registers in accordance with the following conditions within 4 weeks of the day of delivery by the authorised specialist shop.

Registration can be completed on the Internet under www.wagner-group.com/profi-guarantee.

The guarantee certificate is valid as confirmation, as is the original purchase document that carries the date of the purchase. Registration is only possible if the buyer is in agreement with having the data being stored that is entered during registration.

When services are carried out under guarantee the guarantee period for the product is neither extended nor renewed.

Once the guarantee period has expired, claims made against the guarantee or from the guarantee can no longer be enforced.

3. Handling

If defects can be seen in the materials, processing or performance of the device during the guarantee period, guarantee claims must be made immediately, or at the latest within a period of 2 weeks.

The authorised specialist shop that delivered the device is entitled to accept guarantee claims. Guarantee claims may also be made to the service centres named in our operating instructions. The product has to be sent without charge or presented together with the original purchase document that includes details of the purchase date and the name of the product. In order to claim for an extension to the guarantee, the guarantee certificate must be included.

The costs as well as the risk of loss or damage to the product in transit or by the centre that accepts the guarantee claims or who delivers the repaired product, are the responsibility of the customer.

4. Exclusion of guarantee

Guarantee claims cannot be considered

- for parts that are subject to wear and tear due to use or other natural wear and tear, as well as defects in the product that are a result of natural wear and tear, or wear and tear due to use. This includes in particular cables, valves, packaging, jets, cylinders, pistons, means-carrying housing components, filters, pipes, seals, rotors, stators, etc. Damage due to wear and tear that is caused in particular by sanded coating materials, such as dispersions, plaster, putty, adhesives, glazes, quartz foundation.
- in the event of errors in devices that are due to non-compliance with the operating instructions, unsuitable or unprofessional use, incorrect assembly and/or commissioning by the buyer or by a third party, or utilisation other than is intended, abnormal ambient conditions, unsuitable coating materials, unsuitable operating conditions, operation with the incorrect mains voltage supply/frequency, over-operation or defective servicing or care and/or cleaning.
- for errors in the device that have been caused by using accessory parts, additional components or spare parts that are not original Wagner parts.
- for products to which modifications or additions have been carried out.
- for products where the serial number has been removed or is illegible
- for products to which attempts at repairs have been carried out by unauthorised persons.
- for products with slight deviations from the target properties, which are negligible with regard to the value and usability of the device.
- for products that have been partially or fully taken apart.

5. Additional regulations.

The above guarantees apply exclusively to products that have been bought by authorised specialist shops in the EU, CIS, Australia and are used within the reference country.

If the check shows that the case is not a guarantee case, repairs are carried out at the expense of the buyer.

The above regulations manage the legal relationship to us conclusively. Additional claims, in particular for damages and losses of any type, which occur as a result of the product or its use, are excluded from the product liability act except with regard to the area of application.

Claims for liability for defects to the specialist trader remain unaffected.

German law applies to this guarantee. The contractual language is German. In the event that the meaning of the German and a foreign text of this guarantee deviate from one another, the meaning of the German text has priority.

J. Wagner GmbH
Division Professional Finishing
Otto Lilienthal Strasse 18
88677 Markdorf
Federal Republic of Germany

J. WAGNER GmbH

Subject to modifications · Printed in Germany



J. Wagner GmbH Otto-Lilienthal-Str.18 88677 Markdorf Germany



D

CE Konformitätserklärung
Mörtelspritzmaschine

GB

CE Declaration of conformity
Mortar spraying machine

F

CE Déclaration de conformité
Machine à projeter le mortier

I

CE Dichiarazione di conformità
Macchina spruzzatrice di malta

Wagner Plast Coat 1030

Wir erklären in alleiniger Verantwortung,
dass dieses Produkt den folgenden
einschlägigen Bestimmungen entspricht:

2006/42/EG, 2014/30/EU,
2011/65/EU, 2012/19/EU
Angewendete harmonisierte Normen,
insbesondere:

We declare under sole responsibility that
this product conforms to the following
relevant stipulations:

2006/42/EC, 2014/30/EU,
2011/65/EU, 2012/19/EU
Applied harmonized standards, in
particular:

Nous déclarons sous notre responsabilité
que ce produit est en conformité avec les
réglementations suivantes:

2006/42/CE, 2014/30/UE,
2011/65/UE, 2012/19/UE
Normes harmonisées utilisées, notamment:

Dichiariamo sotto la nostra esclusiva
responsabilità, che il presente prodotto
corrisponde alle relative disposizioni
seguenti:

2006/42/CE, 2014/30/UE,
2011/65/UE, 2012/19/UE
Norme armonizzate applicate, in
particolare:

EN ISO 12100:2010, EN 12001:2012, EN 60204-1:2006,
EN 61000-6-1:2007, EN 61000-6-3:2007+A1:2011, EN 61000-3-2:2014, EN 61000-3-3:2013

Markdorf, 12.05.2016
Location, Date

Th. Jeltsch

Chief Technology Officer
Global Product Strategy & Planning
Mr. Th. Jeltsch

J. Ulbrich

Vice President Engineering
Mr. J. Ulbrich
Dokumentationsverantwortlicher
Responsible person for documents
Personne responsable de la documentation
Responsabile della documentazione



J. Wagner GmbH Otto-Lilienthal-Str.18 88677 Markdorf Germany

②

CE Konformiteitsverklaring

CE Konformitetsklæring

DK

CE
Försäkran

⑤

③

CE Declaración de

②

CE Declaração de

Mortelspuitmachine

Mørtelsprøjtemaskinen

Spackelanläggningen

Máquina pulverizadora

Máquina de pulverização de argamassa

Wagner Plast Coat 1030

Wij verklaren dat dit product voldoet aan de volgende norm

Vi erklærer under almindeligt ansvar, at dette produkt er i overensstemmelse med følgende bestemmelser:

Vi intygar och ansvarar för, att denna produkt överensstämmer med följande norm och dokument:

Mediante la presente garantizamos, bajo nuestra exclusiva responsabilidad, que este producto cumple con las correspondientes disposiciones:

Pela presente garantimos, sob a nossa exclusiva responsabilidade, que este produto cumpre com as correspondentes disposições:

2006/42/EG, 2014/30/EU,
2011/65/EU, 2012/19/EU
Gebruikte geharmoniseerde normen,
in het bijzondere:

2006/42/EF, 2014/30/EU,
2011/65/EU, 2012/19/EU
Harmoniserede standarder, der blev
anvendt, i særdeleshed:

2006/42/EG, 2014/30/EU,
2011/65/EU, 2012/19/EU
Tillämpade harmoniserade
standarder, i synnerhet:

2006/42/CE, 2014/30/UE,
2011/65/UE, 2012/19/UE
Normas armonizadas utilizadas,
particularmente:

2006/42/CE, 2014/30/UE, 2011/65/UE, 2012/19/UE
Normas harmonizadas utilizadas, em particular:

EN ISO 12100:2010, EN 12001:2012, EN 60204-1:2006,
EN 61000-6-1:2007, EN 61000-6-3:2007+A1:2011, EN 61000-3-2:2014, EN 61000-3-3:2013

Markdorf, 12.05.2016
Location, Date

7. Wash

J. Pearl

Chief Technology Officer
Global Product Strategy & Planning
Mr. Th. Jeltsch

Vice President Engineering
Mr. J. Ulbrich

EUROPA-SERVICENETZ / EUROPEAN SERVICE NETWORK / RÉSEAU DE SERVICE APRÈS-VENTE EN EUROPE

RETE DI ASSISTENZA EUROPEA / EUROPA – SERVICENETWERK

- | | | |
|---|---|--|
| A J. Wagner Ges.m.b.H.
Ottogasse 2/20
2333 Leopoldsdorf
Österreich
Tel. +43/ 2235 / 44 158
Telefax +43/ 2235 / 44 163
office@wagner-group.at | DK Wagner Spraytech
Scandinavia A/S
Helgeshøj Allé 28
2630 Taastrup
Denmark
Tel. +45/43/ 27 18 18
Telefax +45/43/ 43 05 28
wagner@wagner-group.dk | GB Wagner Spraytech (UK) Limited
The Coach House
2 Main Road
Middleton Cheney OX17 2ND
Great Britain
UK-Helpline 01295 714200
Fax 01295 710100
enquiries@wagnerspraytech.co.uk |
| B WSB Finishing Equipment
Veilinglaan 56-58
1861 Meise-Wolvertem
Belgium
Tel. +32/2/269 46 75
Telefax +32/2/269 78 45
info@wagner-wsb.nl | E Makimport Herramientas, S.L.
C/ Méjico nº 6
Pol. El Descubrimiento
28806 Alcalá de Henares (Madrid)
Tel. 902 199 021/ 91 879 72 00
Telefax 91 883 19 59
ventas@grupo-k.es
info@grupo-k.es | I Wagner colora Srl
Via Italia 34
20060 Gessate – MI
Italia
Tel. 02.959292.1
Telefax 02.95780187
info@wagnercolora.com |
| CH Wagner International AG
Industriestrasse 22
9450 Altstätten
Schweiz
Tel. +41/71 / 7 57 22 11
Telefax +41/71 / 7 57 22 22
wagner@wagner-group.ch | F Euromair Antony
S.A.V. Ile-de-France
12-14, av. F. Sommer
92160 Antony
Tel. 01.55.59.92.42
Telefax +33 (0) 1 69 81 72 57
conseil.paris@euromair.com | NL WSB Finishing Equipment BV
De Heldinnenlaan 200,
3543 MB Utrecht
Netherlands
Tel. +31/ 30/241 41 55
Telefax +31/ 30/241 17 87
info@wagner-wsb.nl |
| D J. Wagner GmbH
Otto-Lilienthal-Straße 18
D-88677 Markdorf
Postfach 11 20
D-88669 Markdorf
Deutschland
Tel.: +49 / 75 44 / 505 -1664
Fax: +49 / 75 44 / 505 -1155
wagner@wagner-group.com
www.wagner-group.com | F Euromair Distribution
Siège Social / S.A.V. Sud
343, bd. F. Perrin
13106 Rousset Cedex
Tel. 04.42.29.08.96
Telefax 04.42.53.44.36
conseil@euromair.com | S Wagner Spraytech
Scandinavia A/S
Helgeshøj Allé 28
2630 Taastrup
Denmark
Tel. +45/43/ 21 18 18
Telefax +45/43/ 43 05 28
wagner@wagner-group.dk |
| CZ E-Coreco s.r.o.
Na Roudné 102
301 00 Plzeň
Czechia
Tel. +420 734 792 823
Telefax 420 227 077 364
info@aplikacebarev.cz | | |